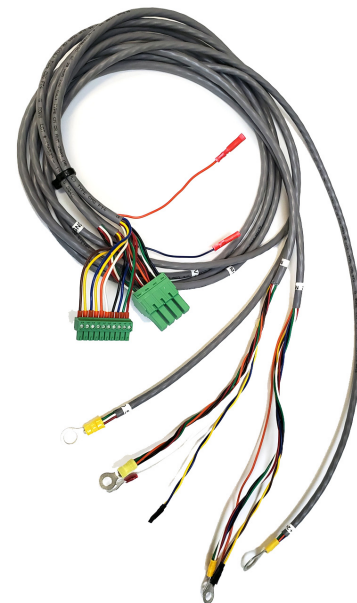


**Sentry-GenPro Battery Monitor** is designed to monitor and evaluate the state of health for generator starting batteries. This reliable monitor is intended to be installed inside the container with high operating temperature and excessive vibration.

Sentry-GenPro-12V		Sentry-GenPro-24V (Default)	
1 string of 2 x 6V	2 strings of 2 x 6V	1 string of 2 x 12V	2 strings of 2 x 12V

- + **Reliable internal resistance measurement for individual batteries including connection resistance, to identify loose or corroded connections.**
- + **Evaluate available CCA (Cranking Current). Generate alarm when lower than setting**
- + **Record and analyze cranking event/exercise. Data can be viewed with HMI display or remotely**
- + **Intelligent algorithm detects thermal runaway risk at its earliest stage**
- + **Temperature monitoring for ambient and each battery string**
- + **Current monitoring from the connection cable, without a transducer, up to 1,000A**
- + **String and battery voltage monitoring to warn insufficient charge condition**
- + **Risk alarms/dry contacts for urgent and service alarms**
- + **Battery bank powered from 9 to 30V**
- + **Plug and play HMI for technician visits**
- + **Modbus-RTU for integration with SCADA or building management**
- + **Easy connection to Sentry battery monitoring system for data access from web page or Modbus-TCP**



**Specifications**

<b>Power Supply</b>	
<b>Power Input</b>	Internal DC/DC converter, 9 – 30V input; Consumption: 2W
<b>Current/Temperature Measurement</b>	
<b>Current Sensing</b>	+/- 1,000A. Using connection cable as shunt. No need for a CT.
<b>Temperature Sensing</b>	1 ambient, 2 pilot sensors. Intelligent thermal runaway detection algorithm
<b>Temperature Range</b>	Measurement range: -40 to 100°C Operating range: -40°C to <b>85°C</b> (-40°F to <b>185°F</b> )
<b>Voltage Measurement</b>	
<b>Battery Configuration</b>	<b>12V</b> or <b>24V</b> flooded/vented/AGM, VRLA or NiCad 1 string of 2x6V or 2x12V; 2 strings or 2x6V or 2x12V <i>[Unit cannot work with single 12V system because the charger in parallel will interfere with measurements. Please replace single 12V with 2x6V batteries.]</i>
<b>Communication</b>	
<b>Serial Port</b>	RS-485 (recommended) and RS232C 9600, 8, 1, N (No Parity, No Flow Control) Modbus-RTU for integration with building management system
<b>Indication and Output</b>	
<b>LED Indication</b>	Dual-color (RED/GREEN) LED for status and alarm
<b>Audible Alarm</b>	Beeping when alarm condition exists.
<b>Alarm/Control Output</b>	Alarm-1: Normal Close, 0.1A capacity, URGENT alarm <ul style="list-style-type: none"> <li>▪ Estimated Cranking Current Low</li> <li>▪ Charger Voltage High/Low</li> <li>▪ Battery Voltage High/Low</li> <li>▪ Temperature High</li> </ul> Alarm-2: Normal Close, 0.1A capacity, SERVICE alarm <ul style="list-style-type: none"> <li>▪ Internal Resistance High</li> <li>▪ Temperature Low</li> </ul>
<b>Dimensions</b>	
<b>Unit Dimensions</b>	140mm(W) x 50mm(H) x 190mm(D)
<b>Mounting</b>	Heavy duty DIN rail mount

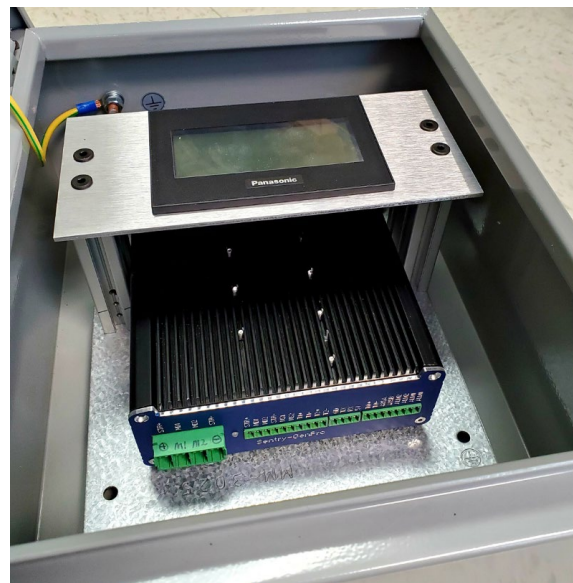
**\*Specifications subject to change without notice**



**Ordering Information**

Example: Sentry-GenPro-24- SB32-HMI-2S6F

Item	Part Number	Notes
Monitoring Unit	Sentry-GenPro-24	24V version (Default) for 1 or 2 strings of 2x12V
	Sentry-GenPro-12	12V version for 1 or 2 strings of 2x6V
Enclosure	-SB32	SB32 steel enclosure, with 4x vibration-damping sandwich mounts
HMI	-HMI	HMI-GT02-GEN
Harness	-2S6F	Default: 6FT, 2 strings Length and lug size shall be provided to match Genset, battery posts and installation location.



NEMA Steel Enclosure. LED Buzzer on panel  
Enclosure Dimensions: 12”(H) x 10”(W) x 8”(D)  
2D/3D CAD files:

<https://www.polycase.com/sb-32>

DIN mounting on base panel.

HMI inside enclosure

Accommodation for other parts such as Moxa modules.

In order to make a perfect fit to your Genset/container for streamlined installation, please discuss with us for logistical details.

Call or Email: [tech@batterydaq.com](mailto:tech@batterydaq.com)

11101 Gilroy Road, Ste. 1  
Hunt Valley, Maryland 21031-1330  
United States

TEL +1 800-455-8970  
FAX +1 484-687-9904  
[www.batterydaq.com](http://www.batterydaq.com)



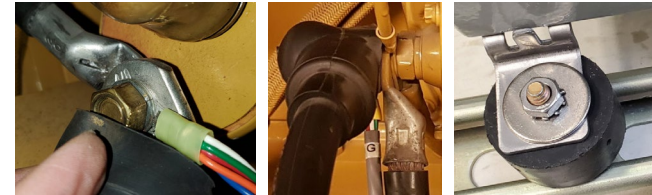
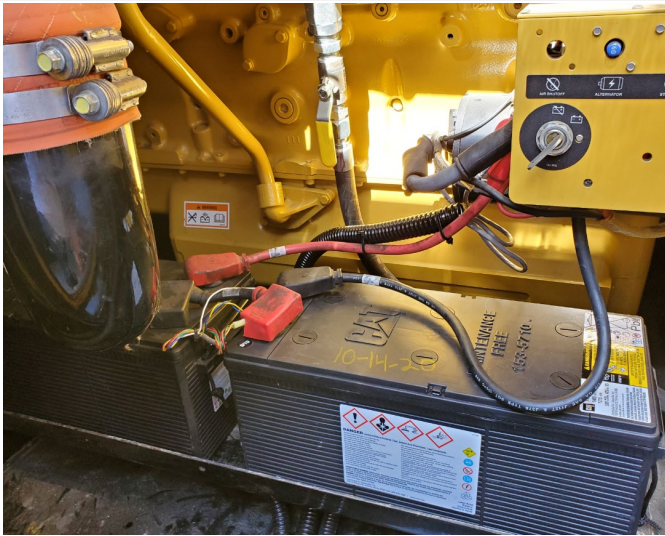
**Installation Photos**



Caterpillar generator in container



Cummins generator



1 or 2 strings of 2x12V  
Harness to Ground, 24V bolts on starter  
Vibration-dumping mounts



HMI inside steel enclosure.  
(Moxa Ethernet and Modbus to collect data from  
GenPro and Genset controller)

More photos online <https://www.batterydaq.com/sentry-genpro>

