



BM8500
SPECIAL FOR UPS/EPS



UP TO : 3000Ah
CELL VOLTAGE : 2V,6V,12V

Battery Monitoring System

KOKII BM8500 Battery Monitoring Systems are specified products designed for VRLAB (Valve Regulated Lead Acid Battery) BM8500 is the valid on-line system to determine the relative performance of individual cells, and predict string standby performance.

BM8500 requires no battery discharge when measures cell IR (Internal Resistance). By analyzing IR and specified data, BM8500 monitoring and predict the performance of each cell. Battery Analyzer, the powerful software of BM8500, can give reports of realtime data, historic data and cell performance.

KOKii
Battery Monitoring System



Battery Monitoring System



KOKII BM8500 SPECIAL FOR UPS/EPS

*Measure cell impedance online
24*7 Automatic test cell voltage and alarm
Intelligent data analysis
Remote monitoring*

Key Functions

Monitoring Items

- Cell Voltage Monitoring
- Cell Internal Resistance(IR) Monitoring
- String Voltage Monitoring
- String Charge & Discharge Current Monitoring (Optional)
- Ambient Temperature Monitoring

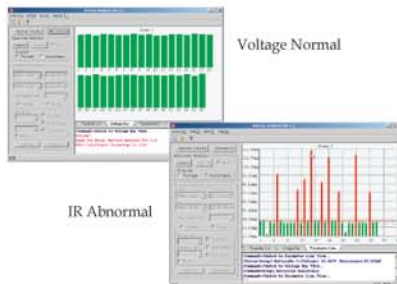
Alarm Items

- String Charge Voltage High/Low
- Discharge Current High (Optional)
- Charge Current High (Optional)
- String Over-discharge
- Cell Charge Voltage High/Low
- Cell IR Over Limit
- Cell Over Discharge
- Cell Short Circuit
- Cell Open Circuit

System Model

BM8500-12 (For string consists of 12V cells)
 BM8500-02 (For string consists of 2V cells)
 BM8500-06 (For string consists of 6V cells)

Cell Voltage & IR in a damaged string



System Configuration

BM8500 systems are consist of Control Module, Monitoring Module, IR Module and Accesssaries.

Control Module (CM) :

Human-Machine Interface for local monitoring
 RS232/485 port for remote monitoring
 Intelligent data processing and analyzing
 Making out-limit alarms
 Relay output when out-limit alarm occurs

Test Module (TM) :

Realtime cell data monitoring
 Module type & easy expanding.
 Different numbers of Monitoring Module can be used upto different string configuration.

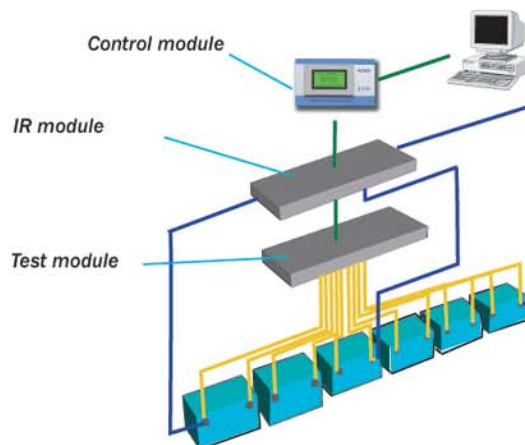
IR module (RM) :

Special design & patented technology for IR monitoring for each cell

Accessory: including connection accessories, temperature sensor etc.

Option: software, Current sensor etc.

System Scheme





Battery Monitoring System

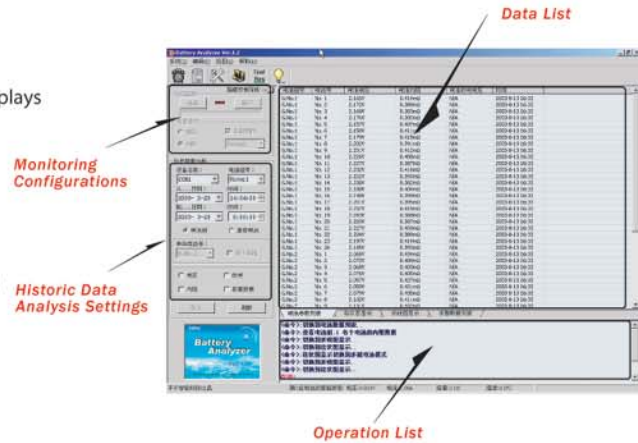


SOFTWARE

Battery Analyzer V1.2 is a very powerful tool for BM8500 analyzing cell voltage, IR and temperature, and predicting battery performance. It acquires and archives realtime and historical data in report and graphical format. Trends of changing voltage and internal resistance over a period of time can be observed through this software.

Software's features

- Captures, archives, reports, and graphically displays data by string, date and cell number.
- Displays voltage and IR tendency
- Displays string voltage, cell voltage, cell IR, ambient temperature in realtime
- Displays string & cell voltage decay data and optional loaded current when discharging
- Lists out-of-limit events and duration



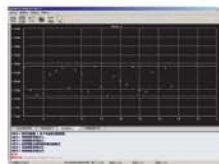
Realtime Monitoring (Data List)



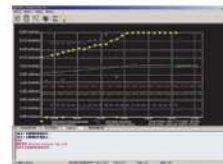
Realtime Monitoring (Data Graph)



Realtime Monitoring (String Curve)



Historic Data Analysis (IR Tendency Curve)



Functional Specifications

Cell Voltage	0 ~ 18VDC, $\pm 0.5\%$
Cell Internal Resistance	0~50 m Ω , $\pm 0.1\text{m}\Omega$
String Voltage	0~600VDC, $\pm 0.5\%$
Charge/discharge Current	0~500A (optional)
Ambient Temperature	5 $^{\circ}\text{C}$ ~45 $^{\circ}\text{C}$, $\pm 1^{\circ}\text{C}$

Battery Safety Link

www.kokii.com

Specifications



BM8500-C400
Control Module



BM8500-T400
Monitoring Module



BM8500-R400
IR Module

C400 Specifications	
Operating voltage	5VDC (from TM)
Interface	STN LCD / Touch Panel
Resolution	128 mm(W) x 64 mm(H)
LCD life	Average 50,000 Hours (25?)
Back light	3-colored LED (Green, Red, Orange)
MEMORY	SRAM
Dimension	180 W * 40 D * 110 H (mm)

T400 Specifications	
Operating voltage	220VAC (From UPS)
Power protection	3A fuse
Isolation	> 5MΩ
Dielectric strength	50Hz 1500V/min
Leak current	less than 5mA
Grounding	Less than 0.5Ω
COM. port	RS232C (to Computer) RS485 (control bus between TMs)
Dimension	443 W * 272 D * 42 H (mm)

R400 Specifications	
Operating Voltage	220VAC (From UPS)
Power Protection	3A Fuse
Isolation	>5MΩ
Dielectric strength	50Hz 1500V/min
Leak Current	Less than 5mA
Grounding	Less than 0.5Ω
IR Signal	10Hz 1A
Dimension	443 W * 272 D * 42 H (mm)

KOKii

Kokii Intelligent Technology

706/718, Building D, Pioneering Park, No.2 Xinxi Lu,
Haidian District, Beijing, China
100085
Tel: 010-82895460/61/62
Fax: 010-82895459
Email: Sales@kokii.com
www.kokii.com

WWW.KOKII.COM

