

BatteryDAQ is a leader in comprehensive battery monitoring solutions. We began back in 1995 by designing our core technology - online internal resistance measurement and subsequently developed a series of products for battery manufacturing and field applications for reserve power and deep cycle batteries. The service extends to financial and data centers, telecommunication, electric utility, petrochemical, broadcast, defense and transportation.



Many applications consist of only a nominal number of batteries configured in a cabinet. Cost, space and remote management concerns made it cost prohibitive to utilize traditional battery monitoring systems for these applications. Sentry is a ground breaking monitor designed to serve those applications. It utilizes our proven wavelet technology in order to achieve accurate internal resistance online measurement. With its industrial grade design and components, Sentry complies with the most rigorous international standards for indoor/outdoor cabinets while providing unsurpassed reliability.

Battery Analyzer V3.0 is a powerful battery monitoring and data management software based on BatteryDAQ's years of experience and expertise. It provides users detailed information by data, tables and charts. The flexible connectivity allows multiple users access to multiple sites in order to manage thousands of batteries throughout a network.

Sentry is compatible with MyBattery global platform. Unlimited sites can be managed by our intelligent platform and experts in BatteryDAQ's data center via land network or wireless GPRS.

Features & Benefits

- Secure critical battery systems with 24/7 online monitoring
- Identify weak batteries with precise internal resistance and trending
- Compact design fits within any cabinet, regardless of the number of batteries
- Record reliable data for routine battery maintenance
- Manage remote sites via land network or wireless GPRS

Construction

Measuring devices Sentry is a system-on-board device. This incredible compact unit measures voltage, internal resistance, current (optional), and ambient temperature. It integrates data collection, processing, communication and alarm output.

Communication Options

- 1) RS232 or RS485 port to PC or server.
- 2) Through Serial-Ethernet adapter.
- 3) Virtual GPRS to MyBattery platform.
- 4) Wireless GPRS for remote sites.

Management Software

- 1) Battery analyzer software.
- 2) MyBattery platform subscription.

Installation & Operation

Sentry comes with a standard or customized harness. It is simple to pre-install Sentry in a new cabinet or retrofit it into a cabinet with existing batteries.

DIY kit includes:

- 1) Sentry monitor with temperature sensor
- 2) Harness, hardware and RS232 cable
- 3) Software and step-by-step instructions

Field technicians can read data through an HMI or laptop. Battery Analyzer software and MyBattery platform provide a reliable solution for remotely managing thousands sites.

Sentry
designed for

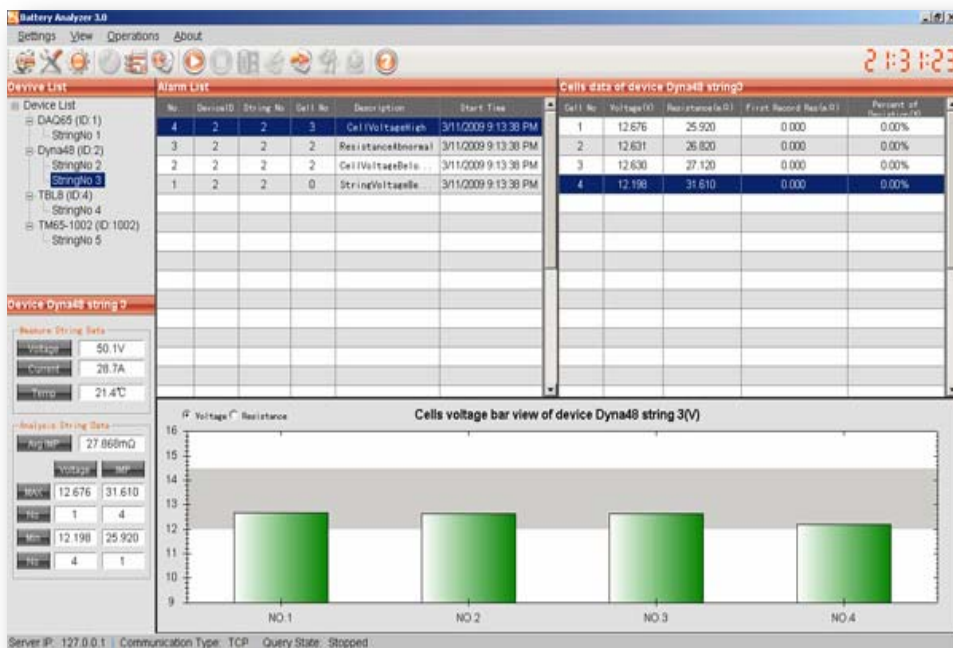
- Telecom Outside Plants
- Cellular Sites
- CATV Cabinets
- Traffic Control Cabinets
- Small/Medium UPS
- Marine UPS

available for

OEM
Private Labeling

Standards

- In compliance with the requirements of the IEEE std 1491 (2005)
- RoHS Compliance
- CE certified
- Manufactured in ISO 9001 facility



General Specifications

Power Supply	5VDC (Universal AC or DC adapter available)
Isolation	500VDC@1min
Current	0.1% + sensor accuracy, 0 to 400A, close loop (Optional)
String Voltage	0 to 100VDC, 0.1% accuracy
Temperature	-20 to +60 °C, 1°C accuracy
Battery Voltage	+/- 20V, 0.1% accuracy
Input Protection	O-ring fused lead for each battery terminal, 100mA fuse
Internal Resistance	0 to 30,000 μΩ, 5 μΩ resolution
TM Protocol	MODBUS RTU RS232C, RS485
Baudrate	Default 9600, 8 bit, 1 stop, None (14400/19200/28800/57600 selectable)
Alarm Output	Normal Close, dry or solid state relay

Typical Application

24V System
2 x 12V, 1 or 2 strings per unit
4 x 6V, 1 or 2 strings per unit

48V System
4 x 12V, 1 or 2 strings per unit
8 x 6V, 1 string per unit

Units can be chained for multiple battery strings.

Software Environment

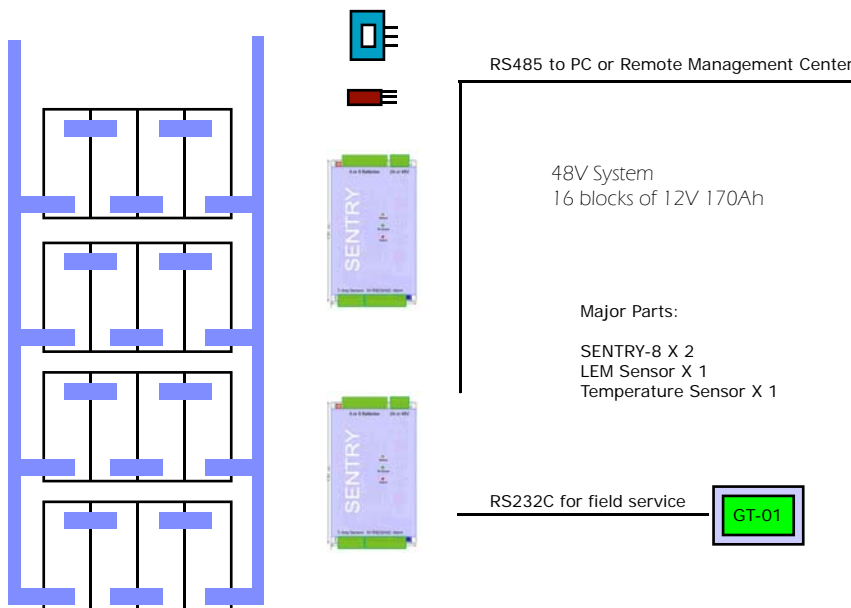
Windows XP+SP2 home/professional
Windows Vista home/professional
Windows 7 home/professional/ultimate
Windows Server 2003 or 2008

Validated Battery Type

Valve Regulated Lead Acid Battery
6V, 12V
Capacity Range: 17Ah to 350Ah



System Example: Sentry 0412-4



Parts List

Sentry TM-8	2 units
Temperature sensor	1
Current sensor, 100A	Optional
RS232-485 converter	Optional
Network adapter (RS485)	Optional
5VDC power adapter	1
Harness kit	1 kit
Battery Analyzer software	1 license

HMI GT-01 Optional

Current sensor is NOT recommended.
Please specify application for pre-configuration.



(Note 1: Batteries and other objects are not in the same scale.)

BatteryDAQ™
Monitoring Solutions
www.batterydaq.com

7309 York Road
Towson, Maryland 21204
USA
Tel: +1-410-337-5233
Fax: +1-484-687-9904

2010 Kokii BatteryDAQ LLC. All rights reserved.
Specifications subject to change without prior notice.

Trademarks and logos are the property of Kokii
BatteryDAQ and its affiliates unless otherwise noted.